

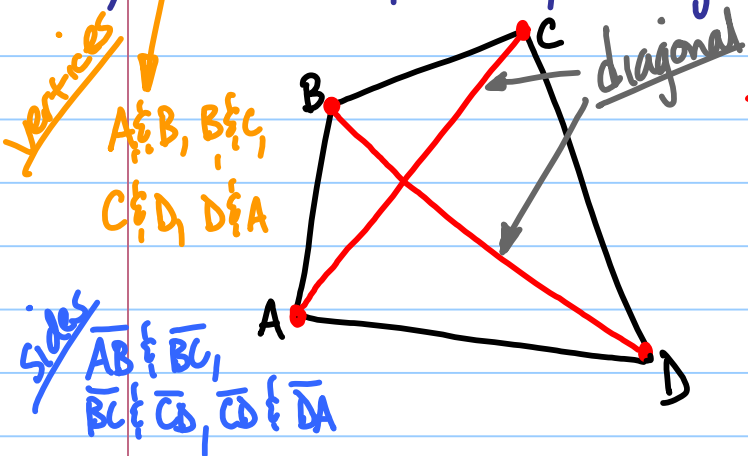
Ch 8.1 - Quadrilateral

→ closed geometric figure w/ 4 sides
 & 4 vertices

ex) * squares, rectangles, * rhombi, trapezoids,
kites, diamonds, parallelograms (ll-gram)

Consecutive & non-consecutive - "next to"

ex 1) → sides, vertices, or angles



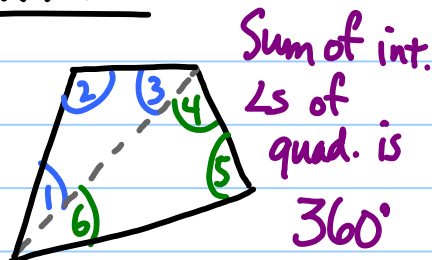
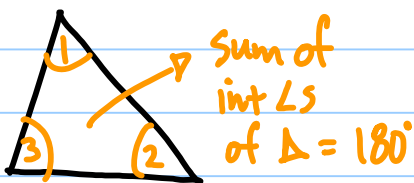
* Two non-consecutive vertices...
 → A & C
 → diagonals

Sides
 $\overline{AB} \& \overline{BC}$,
 $\overline{BC} \& \overline{CD}$, $\overline{CD} \& \overline{DA}$

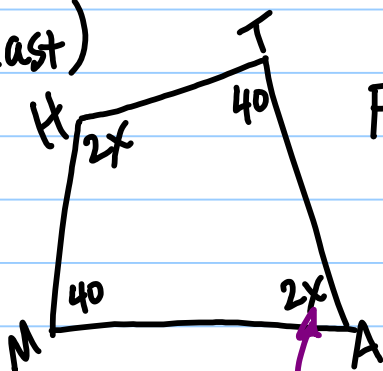
Angles
 $\angle A \& \angle B$, $\angle B \& \angle C$,
 $\angle C \& \angle D$, $\angle D \& \angle A$

Remember....

Thm 8.1



ex (last)



Find the angles.

$$360 = 40 + 2x + 40 + 2x$$

$$360 = 80 + 4x$$

$$\frac{280}{4} = \frac{4x}{4} \quad \text{70} = x$$

→ 40, 140, 40, 140